



This Issue

- Lectures Norene Skiles.....Aug. 6th & 7th
- Lecture: Beth Sullivan.....Sept. 4th
- WQ Officer & Chairman Reports
- Feature Member Interview
- Virtual Quilt Shows, Lectures, & Classes
- Call for Entries
- Neighborly Guild Calendar
- WQ Member Articles

Safer at Home Edition #17



WQ Virtual Quarterly Meeting

WQ welcomes our guest speaker

Norene Skiles

Designing and ordering fabric with Spoonflower

Saturday, August 7, 2021

10 am to noon (speaker at 11am)

Short business meeting and Quilters' Showcase

Zoom meeting invitation will be sent to all members

Upcoming Workshops & More

- August 6th & 7th - Norene Skiles will give two lectures. Hear her lecture "Use it All" on Friday. Then on Saturday's WQ quarterly meeting, she will teach us how to design our own fabric and have it printed at Spoonflower.
- September 4th - Lecture on making t-shirt quilts from Beth Sullivan.
- Remember to Renew your Westside Quilters Membership now to remain part of the email / roster list. New roster / email list to be established early-August. Keep up with WQ Lectures and Programs via Zoom, newsletter articles, the world of quilting and quilter friends!
- *Members enjoy the Quilters Showcase at our meetings. Please send Del, quilterdel@aol.com, photos of quilts to share. Del will NOT be pulling photos from the WQ website, so please send any photos you want to appear in the Quilters Showcase, she needs to receive all photos by noon on Wednesday 8/4/2021 to have time to format for our meeting.*
- Friday August 27th 5pm - Happy Hour Zoom link will be sent to all members
- Meetings and classes will continue on Zoom at least until 2022

National Beach Day - August 30th

"National Day" pictures are actual quilts.



PRESIDENT'S MESSAGE

What does the Olympians and quilting have in common???

Well let's see...

It takes ambition, creativity, practice, perseverance, commitment, dedication, discipline and lots of patience for both athletes and quilters.

AMBITION: a strong desire to do or achieve something, typically requiring determination and hard work

CREATIVITY: the use of imagination or original ideas especially in the production of an artistic work

PRACTICE: the customary, habitual, or expected procedure or way of doing something

PERSEVERANCE: persistence of doing something despite of difficulty or delay of achieving success

COMMITMENT: the state or quality of being dedicated to a cause or activity

DEDICATION: the quality of being dedicated or committed to a task or purpose

DISCIPLINE: activity or experience that provides mental or physical training

PATIENCE: the capacity to accept or tolerate delay, trouble, or suffering without getting angry or upset

I know when I quilt, I need to keep my body fueled, in physical shape and my mind clear & open to accomplish my work just as a gymnast, swimmer or track star may do.

Who knows...maybe the future will hold quilting as an Olympic event!?! Why not, they have skateboarding and trampoline. Most of the time I feel like I've been in a marathon when I'm making a quilt.

As I have been watching the Olympics the athletes and quilters have a lot in common in my book, it's just that they call their instructors "coaches"!

Marianne Simpson, President
Westside Quilters Los Angeles





Coming in August, Quilt teacher

Norene Skiles

August 6 & 7

Zoom lectures

Friday, August 6th at 11:00AM

"Use It All" Now that your studio is organized. How do you organize your fabrics? Norene Skiles will help you with easy, creative ideas

Saturday, August 7th WQ Quarterly Meeting 10:00AM -12:00PM

At the Quarterly meeting Norene will speak about **designing and ordering your own fabric from Spoonflower.**

For Friday, August 6th: 11am – 12noon

\$10 fee for members ** Registration for this lecture is open until noon Wed 8/4/21**

How do you organize your fabrics? Norene will help you with easy creative idea in her lecture "Use It All".

Quilters are the curators of extensive textile collections and should use their materials wisely and without waste. Norene will explain how she organizes her collection (including scraps) and her techniques and ideas for using all your scrap fabric and batting. She will show how her scrap quilting has progressed and includes how she upcycles old quilt blocks and clothing (not tee shirt quilts). She is a firm believer that you should use it all since you paid for it. The lecture/trunk show is centered on the Reduce, Reuse, Recycle theme.

For Saturday, August 7th Quarterly Meeting (free): Spoonflower lecture:

All members will be sent a Zoom link.

- Overview of what Spoonflower is, including: ordering readymade fabrics, getting the most different fabrics for the money (Fill-A-Yard options), and uploading your images.
- How to upload and manipulate your own designs or images to make custom fabrics
- Using Spoonflower to make custom individual labels or bulk labels

Norene's Bio

Norene, a retired school library media specialist, began sewing as a young girl, and has never stopped. She primarily sewed clothing until the birth of her first grandchild 24 years ago. She made her first quilt in 1996. Her quilting style has evolved over the years from patterns and traditional quilting to modern Improv with a scrappy focus. She loves to incorporate technology into her quilting and as many fabrics as possible. She lives in Virginia Beach, Virginia.





Coming in September, Quilt Teacher

Beth Sullivan

Saturday, September 4th at 11:00AM

Zoom lecture

"Making T Shirt Quilts"

Lecture fee: \$20.00.

A Zoom link will be sent to paid participants.

Saturday Lecture with [Beth Sullivan](#), an expert in T Shirt Quilts and Memory Quilts. Her presentation is titled: "Making T Shirt Quilts".

Beth's lecture covers how to incorporate unique items into T-shirt quilts. Though many quilters have heard of T-shirt quilts, they might be stymied by how to get started and then to incorporate interesting items into their quilts.

This one-hour lecture is designed to provide inspiration and guidance for quilters who are thinking about tackling a T-shirt or memory quilt. Quilt samples and photos are used to show how quilters can expand the possibilities of the conventional T-shirt quilt to include anything that can be washed, sewn and made to lie flat. Using interesting items is a focal point of the lecture. In addition, the design and construction of a variable layout quilt is discussed as well as the use of partial seams in construction of unique quilt designs.

About Beth Sullivan Designs

Beth Sullivan Designs specializes in custom T-shirt quilts, memory quilts and T-shirt pillows. Quilts and pillows are all made using high quality materials and techniques. Most items that can be washed, sewn, and made to lie flat may go in the quilts. T-shirts, sweatshirts, pajamas, pants, socks, baby clothes, baby blankets, ties, etc. are all fine! Beth lives in Bellingham, MA.



Leadership.....

Volunteering

At the last Southern California Council of Quilt Guilds meeting, the subject was Volunteerism. Like all of the member guilds, Westside Quilters relies on volunteers to keep things running smoothly, and participants shared views on recruitment, assigning tasks, how best to identify and capitalize on volunteer talent, etc.

I have only been a member of Westside Quilters for a few years, but I am impressed by the group of dedicated volunteers who made this guild the special place that it is and who continue to make sure we enrich the quilting experiences of our members, enjoy camaraderie around a shared love of quilting, and provide opportunities to give to philanthropy. I am also aware that there is a core group of volunteers who have been taking on various responsibilities for a very long time. I thank them, and I hope they will continue to contribute to our organization either in their current position or in another capacity.

But I also know that there are others who haven't stepped up in a while, and some who have not yet stepped up at all. We all benefit from our guild, and we all want it to continue to thrive, present excellent programming, etc. In order to do that, we need people to volunteer.

In a few short months, I will start working to identify a board for 2022-23. Please consider volunteering, start thinking about how you can best contribute, and please say yes when asked to consider serving on the board. I guarantee you will find it a rewarding experience. And, as an added bonus: the Board meetings are fun, and Sally provides yummy treats!

Happy quilting!

Barbara Marom-Pollack
Vice President



Cindi Garacochea	August 2
Nina Flores	August 11
Betty Seinfeld	August 15
Annette Levey	August 15
Shayanni Cermeno	August 16
Stephanie Wexler	August 25
Terrie Dorio	August 26
Bunnie Mauldin	August 31

National Girlfriends Day - August 1st



Membership.....

Westside Quilters
Renewal Time is
Running Out.....



..... Yes, yes sign me up!!!

Thanks to our strong programs group, Pat, Del and Cindi, this past year has been a little bit more bearable because of the interesting and informative lectures and workshops they have provided for us. We encourage those of you who have not yet renewed to do so as soon as possible as the roster will be updated in early August. We look forward to better times. Don't miss out on another year of camaraderie and learning.

Renewal form on Westside Quilter of Los Angeles website and last page of newsletter.

Happy Quilting.

Luann Jaffe
Membership



National WebMistress Day August. 26th



Website and Social Media:

Website -

The WQ website is up to date with events and programs through the rest of 2021. Be sure to check out www.westsidequilterslosangeles.org to find all the latest info on future and past events.

Social Media-

Westside Quilters has a presence on both Facebook and Instagram and the reason for that is two-fold. The first to disseminate information on our events and programs to our members and secondly to promote our brand to the largest audience possible and grow our membership. If you are on either of these platforms, be sure to "Like" and "Follow" our Westside Quilters pages.

On Facebook we are at <https://www.facebook.com/westsidequilters> and on Instagram just search "Westsidequilters" and look for our logo. An important way to get our name and message out to the social media universe is to use hashtags on posts you make public. When you post to your accounts on either platform anything related to your life as a quilter, we ask you to use the hashtags #Westsidequilters or #Westsidequilterslosangeles. This makes these posts searchable by those tags. Search them yourself to see what your fellow WQ members are up to and what others are saying about us. FYI here is a link to a pretty good basic discussion of using hashtags on social media <https://blog.hootsuite.com/how-to-use-hashtags/> Hope you'll join in.

We know that many of you are wary of social media platforms but be assured that you have complete control over what you receive and what information you give out through your privacy settings and what you "Like" and who you "Friend". You don't even have to post your image on your account. If you do take a look, you will find a huge quilting community and an amazing and varied opportunity to learn and participate in our chosen passion.

Sally Wright
Website & Social Media Manager.

Treasurer

Karynn Dittmar, Treasurer

OPENING BALANCE AS OF 6/1/21		7766.51
INCOME		
Membership Dues / Donations	1545.00	
Workshop Fees	170.00	
Bank Adjustment	0.00	
Guest Fees	10.00	
Fabric Sale Fundraiser	20.00	
Amazon	0.00	
TOTAL INCOME		1745.00
EXPENSES		
Workshop Expense	350.00	
General Meeting Expense	0.00	
Charitable Contributions	0.00	
Administrative Expenses	0.00	
Membership Expenses	50.00	
SCCQG Insurance	0.00	
Website	220.25	
PO Box Rental	204.00	
Philanthropy / Ed. Expense	0.00	
Printing / Promotion / Admin.	0.00	
Square Up/Pay Pal Fees	15.85	
Government Fees	0.00	
TOTAL EXPENSE		840.10
NET INCOME		904.90
CLOSING BALANCE as of 7/30/21		8671.41

National Underwear Day - August 5th



Philanthropy.....

Hi Quilters!



Thanks so much for supporting our Philanthropy Zoom Sew-In last month! So far, we have received over 25 completed pillowcases! Please keep them coming!

We're happy to report that we've received another generous donation from Sewing Arts Center! Thank you Julie and Rachel! They gave us several bolts of minky fabric to make philanthropy quilts. Since minky can be difficult to cut, we are asking that you pick up a bolt and cut what you need and then return it for the next person to use. Contact Nancy and let her know which print(s) you'd like and she can do either a pick up or drop off.



As a suggestion, you can make a self-binding baby blanket similar to the quilt that Cindi Garacochea made.

Here's a link to Missouri Star's video on how to make the blanket:
<https://www.youtube.com/watch?v=TtXmuARqg38>

Also, check out this video from Teresa Coates. She shares excellent tips for cutting and working with minky/cuddle since it can be tricky to manage this stretchy and fuzzy fabric: (video is silent first 45 seconds)
<https://www.youtube.com/watch?v=0514aB61XyA>



Thank you for your continued support!
Philanthropy Committee
Virginia, Lisa, and Nancy

Nancy: nancykawahara1@gmail.com or 310.871.6363 (cell)
Lisa: ldrew007@aol.com or 310.902.5821 (cell)

philanthropy@westsidequilterslosangeles.org



Calls for Entry August 2021

So happy to say the quilt shows and exhibits are slowly coming back to life! We're looking forward to a live Road to California in January and International Quilt Festival is planning an in person show in Fall 2021! However, before sending off your entry to any show, double check to make sure that the event is actually taking place. There are a few deadlines coming up soon and some listed below to get ready for next Spring and Fall. Hopefully as 2021 progresses there will be more opportunities. Watch this space!

For some great information from a veteran on how to get your work shown see this blog entry from Sue Bleiweiss <https://suebleiweiss.blog/2018/06/14/getting-your-work-out-there/>

I also recommend this blog post from Lyric Kinard on how to choose venues to display your work - <https://lyrickinard.com/2019/05/showing-your-work-choosing-venues/> In fact, there is a whole series of blog posts on getting your work out there that is well worth your time.

Here are some suggestions for quilt entry photography from International Quilt Festival.

PHOTOGRAPHING YOUR QUILT FOR SUBMISSION

Continuing our notifications for ways to display your quilts and textile pieces to a wider audience... Entering shows is not difficult, but to begin here are a few guidelines:

- Always make sure you read everything in the call including the calendar, requirements, rules, etc. Especially the rules! Will save headaches and disappointment later on.
- Keep a record on your entries so you won't be caught with a quilt needing to go two places at once. Having to remove a quilt from a show or exhibit because you misread the exhibition dates is a no-no. Ask me how I know...
- Having a great photo of your quilt - straight on, in focus, not on a bed or held up showing hands and feet, super important. There is lots of great info on quilt photography on line. Google!
- Don't be intimidated or depressed by a rejection! There are lots of different reasons why a quilt doesn't fit into a specific show. It is usually not because your quilt is bad!

The calls below are just a sample of the many opportunities out there. For more search "Fiber Art Calls for Entry" or "Quilt Calls for Entry"

Road to California - our big local and national show has announced their Quilt Contest for January 2021. Entry is now open at <https://online.roadtocalifornia.com/pageroad.php?ID=77>. *The entry deadline is October 1, 2021.*

NorthWest Quilting Expo (Portland, OR), Sep 23 - 25, 2021
<https://www.nwquiltingexpo.com> Quilt entry page to be updated soon!

Pennsylvania National Quilt Expo, Mancuso Quiltfest, September 16-19, 2021
<https://www.quiltfest.com/enter-competitions/quilt-competition-entry/> *Entry Deadline August 16, 2021*

PIQF - Pacific International Quilt Festival, Santa Clara, October 14-17, 2021. Quilt Competition entry is now open at <https://www.quiltfest.com/register/pacific-international-quilt-festival/piqf-21-quilt-competition-entry/> There is also a Wearable Art category as well as quilts.

New Quilts from an Old Favorite: your choice (Paducah, KY) <https://quiltmuseum.org>

This international contest organized by The National Quilt Museum challenges quiltmakers to create an innovative quilt based on a specific traditional pattern. Winners of the contest traditionally include quilts from many different U.S. states and several other countries.

Entry open from September 1 to December 8, 2021.

Art Quilts XXVI - Vision Gallery & Chandler Center for the Arts, Chandler Arizona. Quilts and storytelling have always complemented one another. Quilts are blanketed in the oral tradition from construction and deconstruction to concept, purpose culture and history. What stories do your quilts tell? Are they family stories? Utilitarian stories? Animal stories? Travel stories? Maybe a concept? Or maybe, "I got mad and cut it all up and sewed it back together" stories? Regardless of whether the narrative lies in the imagery of the quilt, the process in which you made it, or the significance of design or purpose, we want to see your story quilts. November 20, 2021 - January 10, 2022.
Entry Deadline September 13, 2021.

Excellence In Quilts - contemporary quilts in 2D and 3D of any material stitched in two or more layers). Sponsored by Fiber Art Now. <https://fiberartnow.net/calls/>
Entry deadline September 24, 2021

AQS Daytona Beach, February 23-26, 2022. <http://www.cvent.com/events/2022-aqs-quiltweek-daytona-beach-contest/event-summary-40df5368644248b7a01036376e9d39f4.aspx>. *Entry Deadline October 15, 2021*

Rocky Mountain Quilt Museum "Evolutions - Looking Back Moving Forward". Entry opens November 1, 2021. https://media.rainpos.com/5518/2022_evolution_cfe_rules.pdf

Sacred Threads 2021 has announced that the 2021 exhibit will be postponed until July of 2022. *The Call for Entry for 2022 will open in the Fall of 2021.*

SAQA Gastronomy - Gastronomy is the study of the relationship between food and culture, featuring not only the bountiful gifts from nature, but a gift from the human hand. The art of preparing unique, delicate food is a tradition passed from generation to generation, around the world. Combining innovative ingredients, colors, textures, and flavors creates dishes pleasing to both the palette and the eye.

Artists are encouraged to reflect on their personal relationship with food - the enjoyment, comfort, and celebration inherent in the presentation of a special meal. <https://www.saqa.com/events/gastronomy-saqa-global-call-entry> *Entry Deadline November 30, 2021*

Questions? Contact Sally Wright at sally@sallywrightquilts.com



National Beach Day August 30th





A NEIGHBORLY GUILD CALENDAR

August 2021	
August 6 & 7 Westside Quilters www.WestsideQuiltersLosAngeles.org	<u>Norene Skiles</u> Fri, Lecture: "Use it All" Sat. Lecture: Ordering your own designed fabric from Spoonflower.
August 9 LA Modern Quilt Guild www.LAMQG.org	<u>Christina Cameli</u> Lecture: Let's Talk Texture
August 11 & 14 Glendale Quilt Guild www.glendalequiltingguild.org	<u>Mary Ellen Healy Sakai</u> Lecture: The Long and Bobbin Winding Road. Workshop: Machine Quilting,
August 15 African American Quilters of Los Angeles www.easysite.com/aaqla	<u>Meeting</u> – third Sunday of the month
August 18 South Bay Quilters Guild www.southbayquiltersguild.org	TBD
August 1 Simi Valley Quilt Guild www.simivalleyquiltguild.org	"Quilter's Extra Sale" – Fabric Sale
August ? Santa Monica Quilt Guild www.santamonicaquiltguild.org	<u>Dora Cary</u> www.orangedotquilts.com
August San Fernando Valley Quilt Guild www.sfvqg.net	<u>Guild is Dark</u>
September 2021	
September 4 Westside Quilters www.WestsideQuiltersLosAngeles.org	<u>Beth Sullivan</u> Lecture: Making T-shirt quilts
September 8 Glendale Quilt Guild www.glendalequiltingguild.org	<u>Eleanor Levie</u> Lecture: A Magical History Tour of Quilting from 1970 - 2000 Workshop: Weave a Quilt with Me
September? Santa Monica Quilt Guild www.santamonicaquiltguild.org	<u>Carole Lyles Shaw</u>
September 12 & 13 San Fernando Valley Quilt Guild www.sfvqg.net	<u>Sarah Goer</u> Lecture: All About Angles Workshop by Lecture: Rules and Options of Planned Improv Piecing:
September 13 LA Modern Quilt Guild www.LAMQG.org	<u>Timma Tarr</u> Lecture: Flying Colors
September 18 African American Quilters of Los Angeles www.easysite.com/aaqla	<u>Meeting</u> – third Sunday of the month
September ? South Bay Quilters Guild www.southbayquiltersguild.org	<u>Tiffany Hayes</u> Workshop: Caliope Quilt?
September ??? Simi Valley Quilt Guild www.simivalleyquiltguild.org	???

Featured WQ Member:

Matt Randall Member since 2018

I began longarm quilting in 2015 after my mom invited me to go to a quilt show in Houston. We were scheduled to take a shibori dyeing class. Quickly, we both found out shibori dyeing was not for us. I've got the photos to prove it. While there my mom suggested I buy a longarm quilting machine. I had been riding my bike around LA for transportation and had saved enough money for a car. I've always been artistic but had yet to find an outlet that I both enjoyed and would enable me to make a living. I decided to forego the car and take a chance on the machine. The rest is history.



Being a longarm quilter by trade, I primarily work on other quilter's quilt tops. I am absolutely honored to be trusted with these quilts that so much time, love and energy has been put into. I view it as my responsibility to enhance these quilts with my talents so that I can return them to the owners even more beautiful than when they arrived. It's truly one of the bright spots of my life. I love doing both edge-to-edge work; which allows me to pay the bills and keep the light on, as well as the more intense custom work. I really consider myself lucky to have found this craft as well as the community that comes along with it.

I quilt just about 6 days a week. I like to give myself Sundays off as a day of rest. Ideally, my hours are from about 12pm-8pm, but I have been known to quilt late into the night.

Westside Quilters was one of the first guilds I was introduced to. Here I found a wonderful group of ladies who were welcoming, happy, creative and enthusiastic about quilting! Quilting is not just about the quilts; it's also about the amazing people you meet along the way!

First off, my Mom. She has been my most amazing and encouraging teacher from the start. She is also a longarm quilter. We spend much of our time talking about quilts and our upcoming projects. My mom is my hero. On a national level my early influences were people like Angela Walters and Jamie Wallen. As time has passed and I have attended more quilt shows I have befriended and look up to people like Sherilyn Mortensen and Karlee Porter. These are some of the kindest people I've ever met.

Houston International Quilt Festival and Quilt Con in Austin Texas are my two favorite conventions I've visited. To be amongst people like myself on such a large scale was a truly amazing. On top of that, to get to interact with and share ideas with people you've only heard of, is a really special experience.

I find inspiration everywhere all the time. Especially in nature and architecture. Once you really dive into something like quilting you can't help but notice patterns and lines and color and texture everywhere you go!



More about Matt....

When I moved to California 6 years ago, I was going through a hard time. One day I received a package in the mail. It was a quilt from my mom and just in time! It was a quilt she designed, pieced and custom quilted herself! Some of the fabrics she picked featured lions... Lions! This quilt amazingly picked me up and set me on my feet. It gave me the COURAGE to keep going. It was then that I understood the power and impact that a quilt can have.

Question: "Is it possible for a quilt to bring you more comfort and warmth when it is made with love??"

Answer: "Yes... Yes it is



At Home and Surfing the Internet

(Temporarily replacing OUT AND ABOUT)

Ready for an actual in person local quilt exhibit? **Art Quilts 2** opens June, 24th at the California Heritage Museum in Santa Monica. The juried exhibit showcases the best of the California region of SAQA artists (Studio Art Quilt Associates). Our own members **Sherry Kleinman, Kathryn Pellman** and **Sally Wright** have work included in the show. The exhibit runs through September 19th Wednesday through Sunday 11-4. \$10.00 admission, but free admission on Fridays. [California Heritage Museum-2612 Main St, Santa Monica, CA 90405.](https://www.chm.org/2612-Main-St-Santa-Monica-CA-90405)

Need a trip out? **Sewing Party** is having their next Open Studio on August 14th. Email them at for an appointment at customerservice@sewingparty.com

From the San Jose Museum of Art - for a conversation with Helen Remick and Samantha Shorey, key members of the **NASA-inspired Core Memory Quilt** project! on: How to Stitch a Macrochip: Enlivening History through E-Textiles...
https://www.youtube.com/watch?v=FusCT_A2gzE

Shannon Brinkley on How to Create Original Quilts...https://shannon-brinkley.com/blogs/shannon-brinkley-studio-1/make-more-mistakes?_pos=1&_sid=622597843&_ss=r

An interview with the **Hanspeter Ueltschi** the owner of Bernina...
<https://www.youtube.com/watch?v=USM3qdLxINo>

Lisa Walton's one woman show at the Quiltfestival in Groningen Netherlands in 2020 was cancelled due to Covid, but here is her online version of the exhibit.
https://youtu.be/7uw0J-oMI_A

The Cross Culture Center at Chapman University is working with "Quilt'n Things" quilt shop owner, Lana Norton to put on a quilt block exhibit titled: Matriarchy: Our Connecting Thread. Lana is inviting Southern California quilt guild members to participate. Details can be found Quilt'n'Things Fiber Arts (quiltnthings.com). Three block themes were developed to explore the role of women and of "matriarchy" in defining a collective history: Women of the Past: they threaded the needle, Women Today: we're stitching our story, and Women in the Future: how will you push the needle forward. **Deadline September 1st**. Feel free to call the shop at 818-957-2287 with any questions.

See the Speaker Calendar of the Southern California Council of Quilt Guilds for additional events. Go to www.sccqg.org scroll down to the bottom of the homepage and click on the box "Speakers" and see other SCCQG guilds and speakers into 2020

Exhibition Dates: June 24, 2021 – September 19, 2021
New: FREE Admission Every Friday • FREE Admission to Military and their family.
Museum Hours: Wednesday through Sunday, 11:00 a.m. until 4:00 p.m.

Fantastic Catalogue available Today!!!
• 72 pages • Full Color •
To BUY the catalogue Call: (310) 392-8527.
\$25. Includes Tax; Plus \$5. Shipping and Handling
Or \$25. Pick it up at the Heritage Museum.



ART QUILTS 2



Member Articles...

Quilts from the Orange County Fair

By Pat Karasick

Some great quilts spotted by Pat Karasick while attending the Orange County Fair. Okay, so the ball covered in vintage buttons is not a quilt, but how cool is this way to display your collection of antique buttons.



TQS BOM downsized, still spectacular.

Cat with books was a staff favorite. The quilting was done like a wood surface.



Who doesn't need a little HOPE in their life?

The Modern quilt with circles proves that all you need is one shape and color. The different sizes make it really interesting.

If you want to go, you must buy your Orange County Fair tickets online. Parking is cash only, \$10 day of attending the fair. I lucked out with a beautiful sunny, breezy day and not too many attendees. The Fine Art Building had some great paintings and mixed media.



More quilts photos and fun Halloween village, great time to visit the fair!

iPhone/iPad - Anything you don't want to lose

By Pat Karasick

Phone holder or iPad holder or anything else you don't want to lose.

Start with a piece of fabric 12" x 9".

Small piece of fabric 2" x 3" (optional) for cord minder

1 1/4" x 5 3/4" cardboard

Polyfil

Weighted filler, rice, beans, weighted ply-pellets (Amazon)

Fold fabric in half. Sew across the top and side. Turn inside out, poking out the corners.

Fill bottom of the bag with poly-fil, sew across, 1 1/2" up to from a small pillow to hold your phone/ iPad/?

Insert the cardboard. Sew a seam about 3" up to enclose the cardboard. This forms a little shelf to hold the item.



Marshfield Fair

By Pat Karasick

Westside Quilters are winners! This is my winning block accepted into this year's raffle quilt. Twenty winning blocks will be made into a quilt and hand quilted at the Marshfield Fair. Pat is a six-time winner. Bobbie Blake's 3-D pinwheel block was also accepted. This year's contest theme was pinwheels. The sashing will be pieced from feed sacks. My pinwheels were made from vintage feed sacks. The blocks measures 12 1/2" x12 1/2".



I first learned about the contest while visiting my Mother-in-Law in Marshfield, MA. It seemed like a fun thing to do. Each year is a different theme. Blocks that don't make it into the Raffle quilt are made into charity quilts. This year the quilts are going to a house for protecting rescued young women from the sex trafficking trade in Boston.

If you want to participate in next year's contest, the theme is Winter Wonderland Scene. The sashing will be black/ brown. Your block needs to measure 12 1/2x 12 1/2", unfinished. You can use a traditional pattern, applique, or an original design, make the block by hand or machine to reflect the theme. Do not back the block. Deadline is June 1, 2022. Remember these ladies are going to hand quilt the blocks. My arty blocks have always been rejected for being too hard to sew through. I usually submit three blocks.

For more information check the website: Peggy Beals Quilt Block Contest at the Marshfield Fair.

There is even a category for youth ages 5-18.

Questions can be submitted to: exhibitors@marshfieldfair.org



Winning block by Bobbie Blake

PILLOWCASES FOR CHARITY

By Betsy (Janet) Barker

When the news on TV is negative, I make a pillowcase for charity. I feel better when I am making a special gift for a homeless child or a military veteran who is in desperate need of solace. The demand for comforting pillowcases is strong today as many people have lost their loved ones, work, and homes due to COVID-19.

These quick and easy patterns are called the burrito method, the hot dog method, or the sausage method. Pillowcases are a good beginner project. Whoever gets your pillowcase will be happy for your kindness, so don't worry about being perfect. In a few hours, even a new quilter can produce a batch of pillowcases, taking much less time than a full quilt would require.

My stash is overflowing with fabric purchased years ago that I will never make into a quilt. Using up my stash for pillowcases makes it easier to find what I want to use now.

Think about making pillowcases to wrap your holiday and birthday gifts. This reduces the need for paper wrapping and can be used again and again. Some quilters make a pillowcase as a wrapper for any quilts that they give as gifts.

While cotton is the most common fabric, consider using flannel for extra softness. The videos below generally use a three-part pillowcase: body, cuff, and decorative flange. A standard pillowcase uses 27" by width of fabric for the body. Here is a link to [Standard Pillowcase Sizes](#) so that you can calculate the fabric requirements for other sizes.

Most patterns use a 9" by width of fabric strip for the cuff. View [20 pillowcase patterns](#) including pieced or embroidered cuffs.

For the flange, the strip size ranges from 1 ½" to 3" by width of fabric. Ribbon, wide rick rack and lace also work well for the flange. Some patterns don't use a flange at all which makes for a faster finish.

Try making pillowcases one step at a time like an assembly line. While I'm waiting for the microwave, I can make a kit of three coordinating fabrics and tear them into the size I need. Working in steps is great if you have only a few minutes a day to sew. Doing the same operation for each pillowcase kit is very efficient (like chain piecing).

Jenny Doan from Missouri Star is known for her easy patterns and clear instructions. This link describes her basic method: [Missouri Star Easy Pillowcase](#). Watch Jenny help her 9-year-old grandson make a pillowcase: [Kids can make pillowcases](#).

Shabby Fabrics shows how to [use directional fabric for a pillowcase](#). [Using a border print for a pillowcase](#) is demonstrated in this video.

Trouble-shooting tips (so that you don't have to repeat my mistakes):

- Roll the large piece tightly so that it doesn't get caught in the main seam.
- Catch all the raw edges in the main seam when pinning.
- Pin the main seam from the center out to the edges.
- If sewing with a child, 1/2" is ok for the main seam.
- Consider reducing the sewing machine speed to make it easier to hold the layers together.
- When pressing, start with the inside of the pillowcase on the main seam. Press the cuff away from the body but don't press to the edge.
- Then flip to the outside and press from the main seam out to the edge.
- It's easier to even up the sides once the pillowcase has been ironed. This is a good time to trim off the selvedge edges of the fabric.
- Sew slowly over the bulk of the side seams and flange. You may need to pull gently on the fabric to help it move through the foot and feed dogs.
- When sewing the ¼" side seams, backstitch at the corners for durability.
- Trim the side seams to 1/8" for French seams.
- It's ok if some threads show on the outside after making the French seams. These will disappear when the pillowcase is washed.

Quilters are known for giving generously of their time and sewing skill. Consider taking a few moments to make pillowcases for those who are suffering in this difficult time.

Betsy (Janet) Barker
Interactive Media Development
Quilt Artist



Editor's Note:

In February of 2020 I added two companion panels to my Trees quilt, my Trees quilt was displayed in the SCCQG exhibit at Road to California 2020 (see picture). The fall of 2019 had been a terrible fire season in both northern California and Australia, and the new panels were meant to be a symbolic nod to my niece and her Australian husband who are both environmentalists.



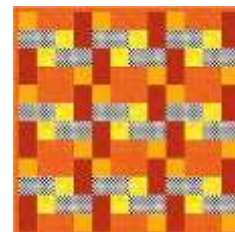
Little did I know or possibly imagining that 2021 would be an even worst year for destructive fires. My niece and her spouse live in Quincy, CA, a sweet little town in Northern California on the eastern side of the Sierras. Currently Northern California's Dixie Fire is burning 4 miles from the town. They have evacuated their home and are staying with friends. Normally there are 3 roads that can be used to get to Quincy, but due to the fire 2 of the roads are within the mandatory evacuation zone and are blocked. My niece told me she didn't want to get stuck in a long line of cars trying to exit Quincy if and when mandatory evacuation orders were given so they have voluntarily headed south on the one remaining road and are staying with friends, (smart girl!).

My re-titled quilt:
Climate Change – Too Hot and Fierce to Ignore

Pray for rain and the safety of our Fire Fighters.

Stay Safe and Healthy.....
Happy Stitching,

Debbie Nussbaum
Newsletter Editor



Westside Quilters Executive Board meeting, July 17, 2021

President: Marianne called the meeting to order at 10:00. The June 19 minutes were approved with Sally moving and Lisa seconding the motion.

Vice President: In the absence of Barbara, Pat reported on the Southern California Council of Quilt Guilds meeting. The next Meet the Teachers will be in April 2022. Registration for Road to California will begin on August 14 for classes in January 2022. The Road quilt show opens on January 19 with classes that entire week.

Pat said the majority of the meeting concerned how to encourage volunteerism in the individual guilds and how to get members to participate.

Treasurer: There is \$8309.31 in the treasury.

Membership: Luann will send out an email to those who have not yet renewed their membership. There are currently 51 members.

Programs: Pat said that all programs for the rest of 2021 are set and most of 2022 is in place. Upcoming programs will feature Norene Skiles, Beth Sullivan and Catherine Redford. WQ will also have the annual Philanthropy sew-in and Holiday Tea in November and December.

Philanthropy: Sewing Arts Center has donated 12 bolts of Minky/Cuddle fabric from Shannon Fabrics. Contact Nancy Kawahara if you are interested is using some for philanthropy quilts.

Newsletter: Articles are due on July 27.

Website: Sally reported the website is up to date through November. She will also write an article on using hashtags on Instagram and Facebook to tag Westside Quilters.

Other Business: The quilt Mac MacNamara donated to WQ will be given to a member at the August 7 quarterly meeting using a random number drawing.

New Business: The next meeting will be August 21 at 10:00 at Sally's.

Meeting adjourned at 11:00.

Respectively submitted,

Terrie Dorio, Secretary



<p><u>National Watermelon Day</u> August 3rd</p> 	<p><u>International Mahjong Day</u> August 1st</p> 	<p><u>National Red Wine Day</u> August 28th</p> 
--	--	---

Next Executive Board Meeting

The next meeting of the Executive Board will be held, August 21, 2021
All members of Westside Quilters are welcome to attend with prior notice to
Pres@WestsideQuiltersLosAngeles.org.



Our Mission

A new kind of guild organized for educational and charitable purposes; to promote cooperation and the exchange of ideas among quilters; to instruct members in methods and techniques of traditional and contemporary creative quilting; to serve mini-groups and their philanthropic endeavors within the community; to inspire personal achievement.

Officers 2020-2021

President	Marianne Simpson
Vice President	Barbara Marom-Pollack
Secretary	Terry Dorio
Treasurer	Karynn Dittmar
Program	Pat Karasick, Del Walker, and Cindi Garacochea
Membership	Luann Jaffe
Newsletter	Debbie Nussbaum
Philanthropy	Nancy Kawahara, Virginia Marshall, and Lisa Drew
Website Manager	Sally Wright

Appointed Positions

Hospitality	Kim Ryan, Matt Randall
Meeting Set-Up/Take-Down	Marianne Simpson Lisa Drew and Sonja Daniel
Photographer	Sally Wright
President Emeritus	Roberta Walley

Mailing Address **Post Office Box 641925**
 Los Angeles, CA 90064

Website

www.WestsideQuiltersLosAngeles.org

Facebook We're on Facebook. Check out the banner on the WQ website home page (lower center).

Amazon There is a boxed message in the lower center of our website home page giving a direct link to Amazon. By using this link, anything you purchase earns a 4% "dividend" paid directly to WQ. *This only works if you enter the Amazon website from the WQ website link.*

iGive.com This is another way to benefit WQ when shopping on the Internet. Here you need to register (the iGive.com logo appears in the lower center on the WQ website home page and links you directly to iGive.com). More than 800 Internet retailers participate (Barnes & Noble, Bed Bath & Beyond, Enterprise Rent-A-Car, Lancome -- to name a few). Follow the instructions at iGive.com.

Non-Profit Status Westside Quilters is tax-exempt from Federal income tax under section 501(c)(3) of the Internal Revenue Code, and classified as a public charity under section 170 of the Code, according to the determination letter dated May 26, 2011 received from the Internal Revenue Service. The effective date of exemption is June 17, 2010. Donations to Westside Quilters are fully tax-deductible for individuals and other entities such as corporations, partnerships, trusts; Westside Quilters is qualified to accept tax deductible bequests and gifts or transfers of gifts.

F.E.I.N. 27-3145733
(Federal Employer Identification Number)



Want to continue receiving the fabulous, informative, and fun "Members-Only" Westside Quilters newsletter?

Let Membership Chairperson, Luann Jaffe know to keep you on the roster.



WESTSIDE QUILTERS

Membership Form June 1, 2021 to May 31, 2022

PLEASE WRITE CLEARLY and MAKE SURE YOU INCLUDE YOUR EMAIL ADDRESS

Name		Birthday
Address		
City/State/Zip Code		
Home Phone	Work Phone	Cell Phone
Email:		
Occupation	Retired ? From?	
Member of Mini-Group	Interested in joining a mini-group?	

- Renewal Membership** **New Member**

Annual Membership Dues to May 31, 2022 [dues are not tax deductible]

\$50.00

Fully Tax-Deductible Charitable Donation _____

Total Amount Enclosed _____

Members of Westside Quilters (WQ) may participate in all Guild activities, have the right to vote, hold elective or appointed office, attend General Meetings without fee, and register for work-shops at membership rates. WQ members pledge to perform a few service hours each year.

For renewing members, please indicate your contributions this past fiscal year:

- Served on the Executive Board or a volunteer committee.
- Engaged in philanthropic quilting activities (WQ or other organizations).
- Assisted at general meetings or workshops or field trips.
- Contributed to the WQ newsletter or distributed promotional WQ material
- Other activities _____

Members can pay with a check, credit card or debit card, Zelle through your banking software or PayPal to WestsideQuilters@Yahoo.com

(1) If paying by check, make your check payable to "Westside Quilters."

(2) If paying by credit card or debit card, please fill in the information below.

Credit card number _____

Name as it appears on card _____

Expiration Date _____

- American Express MasterCard Visa Debit Card

CVV _____ Billing Zip Code _____

(3) Please sign and complete this application.

(4) Mail application and check (if paying by check) to Westside Quilters,
Post Office Box 641925, Los Angeles, CA 90064.

Signature

Date

Westside Quilters is a Federal 501(c)(3) tax-exempt public charity. The effective date of exemption is June 17, 2010, as specified in the determination letter dated May 26, 2011.